

# Glacial History of the Watershed

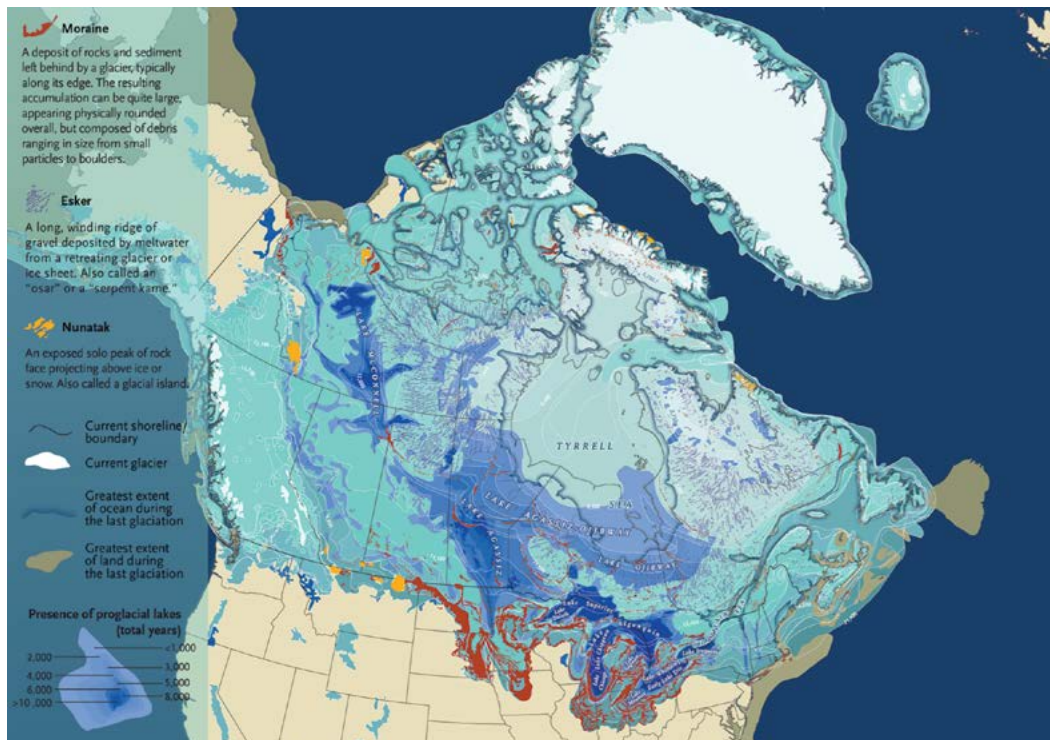
## *The power of ice*

### Glaciation and the Great Lakes Information Cards

#### Moraines

**Description:** Moraines are ridges of rocks and dirt that were pushed and left behind by moving glaciers. They often form at the edges of glaciers.

**Map:** Examples of locations where moraines are found are labeled in red on this map.



Map: Chris Brackley/Can Geo; Glacial, lake, ocean and land extents based on data by Arthur S. Dyke. [Source](#).

#### Examples:

Oak Ridges Moraine, Ontario  
Port Huron Moraine, Michigan

#### Discussion Questions:

- What materials make up the moraine?
- How do glaciers create these ridges?
- Can you find any other examples on the map where a glacier might have left behind a moraine?

# Glacial History of the Watershed

## *The power of ice*

### Glaciation and the Great Lakes Information Cards

#### **Kettle Lakes**

**Description:** Kettle lakes are small, round lakes formed by melting ice chunks left behind by glaciers. They are often found in groups.

**Photo:** Canoes at Green Lake, one of 22 lakes in Kettle Lakes Provincial Park near Timmins, Ontario.



Radiowallah, CC BY-SA 3.0

#### **Examples:**

Kettle Lakes Provincial Park, Ontario

Waterloo State Recreation Area, Michigan

#### **Discussion Questions:**

- *Why do you think kettle lakes are often found together?*
- *Can you find any other clusters of small, round lakes on the map?*

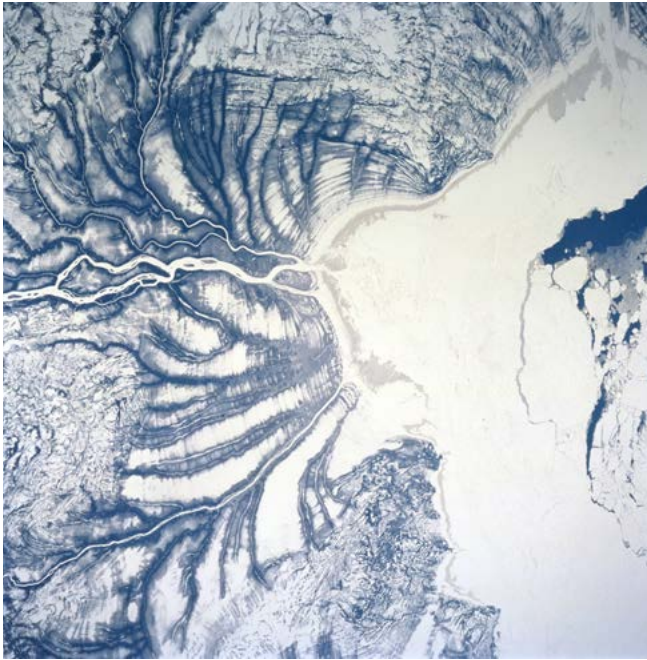
# Glacial History of the Watershed

## *The power of ice*

### Glaciation and the Great Lakes Information Cards

#### **Isostatic Rebound**

**Description:** Isostatic rebound is the rise of the land after being compressed by the weight of glaciers. This process continues today.



NASA, Public domain

#### **Examples:**

Hudson Bay Lowlands, Ontario

Lake Superior Basin

#### **Discussion Questions:**

- *Why does the land rise after the glaciers melt?*
- *How do you think this affects the landscape over time?*
- *Can you identify any other areas on the map that might be experiencing isostatic rebound?*



# Glacial History of the Watershed

## *The power of ice*

### Glaciation and the Great Lakes Information Cards

#### **Drumlins**

**Description:** Drumlins are streamlined, elongated hills formed by the movement of glaciers. They usually have a steep side and a gently sloping side.



Lvanvlee8 via Flickr

#### **Examples:**

Peterborough Drumlin Field, Ontario  
Finger Lakes region, New York

#### **Discussion Questions:**

- *How do you think the glacier created this feature?*
- *Can you find any other examples of drumlins on the giant floor map?*

### Glaciation and the Great Lakes Information Cards

#### Erratics

**Description:** Erratics are large boulders that have been transported and deposited by glaciers, often found far from their source.



sbeam, CC BY-SA 2.0

#### Examples:

Madison Boulder, New Hampshire

Rock City, New York

#### Discussion Questions:

- What do you notice about the size and shape of the erratic?
- How do you think the glacier transported this large boulder?