



2. HISTORICAL IMAGE CARDS



H.M. King George VI and Queen Elizabeth unveil the War Memorial, 19 May 1939



2. HISTORICAL IMAGE CARDS



Union Station, Château Laurier and the old post office, 1911

Credit: National Film Board of Canada / NCC Greber Collection. © expired; restrict. = nil
National Film Board of Canada / Office national du film du Canada



2. HISTORICAL IMAGE CARDS



Credit: City of Ottawa Archives/ C-003776

Sparks Street, looking West, 1898



2. HISTORICAL IMAGE CARDS



Confederation Square, 1930



2. HISTORICAL IMAGE CARDS



Second Great Fire of Ottawa-Hull, February 4th, 1916



2. HISTORICAL IMAGE CARDS



Great Fire of Ottawa, 1900



2. HISTORICAL IMAGE CARDS

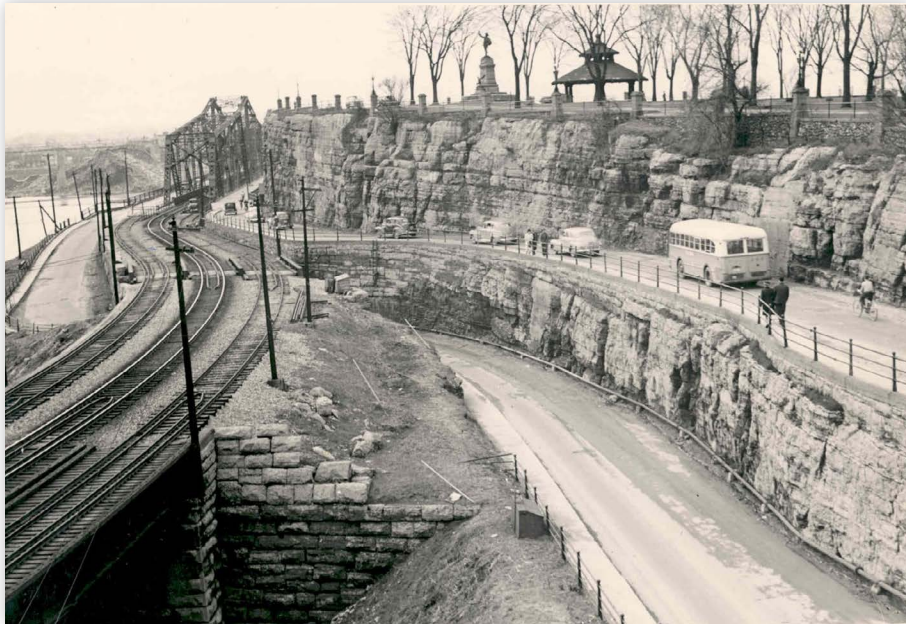


Credit: NCC Greber Collection/ Library-Archives Canada

Kiweki Point (formerly Nepean Point), 1925. Kiweki Point with footbridge from Major's Hill Park.



2. HISTORICAL IMAGE CARDS



Credit: NCC Greber Collection/ Library-Archives Canada

Kiweki Point (formerly Nepean Point), 1950s. Alexandra Bridge and Kiweki Point with Statue and Gazebo; train tracks next to Rideau Canal Locks with bus travelling from Ottawa to Hull, 1950s



2. HISTORICAL IMAGE CARDS



Credit: Samuel J. Jarvis / Library Archives Canada PA-025097

Diamond Jubilee celebrations, Parliament Hill, July 1927



2. HISTORICAL IMAGE CARDS



Credit: Canada, Dept. of Public Works / Library and Archives Canada / PA-143969 © expired; restrict.
= nil LAC BAC: <http://central.bac-lac.gc.ca/.redirect?app=fonandcol&id=3201887&lang=eng>

Victoria Memorial Tower's bell, c.a. 1920. Arrival of Bells in Victory Tower (Parliament Buildings)



2. HISTORICAL IMAGE CARDS



Credit: William James Topley / Library and Archives Canada / PA-009237 © expired; restrict. = nil; Topley Studios/ Topley Series E: LAC-BAC: <http://central.bac-lac.gc.ca/redirect?app=fonand-col&id=3194672&lang=eng>

Fire at Parliament Hill, February 4, 1916.



2. HISTORICAL IMAGE CARDS

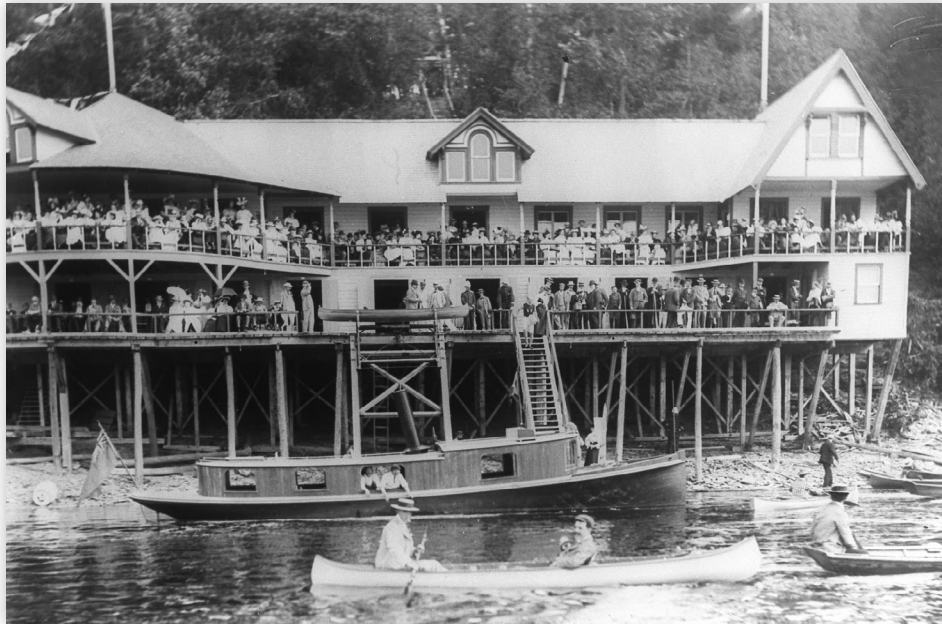


Credit: Dominion Bridge Company / Library and Archives Canada / PA-117238. © expired; restrict. =
nil. LAC-BAC. <http://central.bac-lac.gc.ca/redirect?app=forandcol&id=3392146&lang=eng>

Construction of Alexandra Bridge, September 1900.



2. HISTORICAL IMAGE CARDS



Credit: William James Toppley Library and Archives Canada/PA-012729. © expired; restrict. = nil.
Toppley Studios/ Toppley Series E /Mikan no. 3422996. LAC.BAC. <https://recherche-collection-search.bac-lac.gc.ca/eng/home/record?app=fontandcol&id&Number=3422996>

NCC River House at Regatta Time, Aug. 1894.



2. HISTORICAL IMAGE CARDS



Source: NCC photo bank A13751-5-9 - Greber Collection. Credit: Library and Archives Canada/Jarvis/C-006895. © expired; restrid. = nil C-006895 /MIKAN NO. 3399101
LAC-BAC; <http://central.bac-lac.gc.ca/.redirect?app=fonandcol&id=3399101&lang=eng>

Ottawa riverboat on the Rideau Canal, The steamer "Rideau Queen" of Kingston travelling on the Rideau Canal. Parliament Hill in the background of the steambot. 1912.



2. HISTORICAL IMAGE CARDS



Credit: City of Ottawa Archives/RG045/CA001504. © expired; restrict. = nil

Sparks Street, horse drawn streetcar (omnibus) between Metcalfe and Elgin 1877.



2. HISTORICAL IMAGE CARDS



Credit: William James Topley/ Library and Archives Canada/ PA.008508. © expired; restrict. =
mlTopley Studios/ Topley Series SEMIKAN NO. 3326183. LAC-BAC: <http://central.bac-lac.gc.ca/>.
redirect?app=ionandcol&id=3326183&lang=eng

Rideau Canal, Ottawa Locks. Alexandra Bridge and C.P.R. train, in background. c.1900s.



2. HISTORICAL IMAGE CARDS



Credit: William James Topley / Library and Archives Canada / C-016714. © expired; restrict. = nftopley Studio fonds / C-016714 / MIKAN NO. 3532603. LAC-BAC: <http://central.lbac-lac.gc.ca/>. redirect?app=fonandcol&id=3532603&lang=eng

Major's Hill Park, 1905. Major's Hill Park with cyclist and policeman.



2. HISTORICAL IMAGE CARDS



© expired; restrict. = nilLord Minto Collection/ PA-033786/ Mikan No.3386261. Credit: William James Topley/ Library and Archives Canada/PA-033786, LAC-BAC: <http://central.bac-lac.gc.ca/?redirect?app=fonandcol&id=3386261&lang=eng>

Minto party skating on the Ottawa River. Dec. 1901.